



3 Salamanca Place, London
SE1

GARTONJONES.COM



3 Salamanca Place, London , SE1

GARTON JONES.COM

9 Albert
Embankment
London
SE1 7SP

Sales +44 (0) 20 7735 1888
nineelms@gartonjones.com
www.gartonjones.com

£480 Per Week

A spacious 1-bedroom apartment of 572sq.ft (53.17sq.m) available for rent in 3 Salamanca Place, a modern riverside development located between Lambeth & Vauxhall Bridges. This spacious property consists of 1 double bedroom, an open plan reception room with modern integrated kitchen, good storage throughout, and a well-proportioned bathroom. The apartment has recently been refurbished and now features brand new, durable laminate wooden flooring throughout, as well as freshly painted interiors. Most of the furniture is also brand new, including the sofa, bed, mattress, carpets, desk, coffee table, chairs, and TV unit.

3 Salamanca Place benefits from lift access and an on-site convenience store, as well as being moments from several cafes, pubs & shops. Transport links are excellent with the rail and tube services of Vauxhall a short walk away and a frequent bus service to the West End and City on the doorstep.

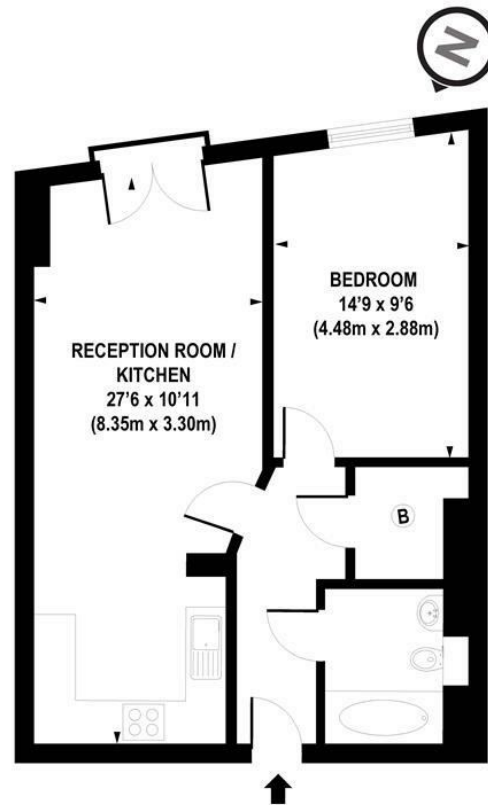
Please note furniture may differ to that shown in the current photos.

- Electricity Supply — Mains | Water Supply — Mains | Sewerage — Mains | Heating — Electric Radiators
- Broadband & Mobile Signal : Check Coverage via Ofcom
- Parking: No Parking Included
- Lift Access
- Building Safety: EWS1 Available on Request
- Council Tax Band E (London Borough of Lambeth)
- 5 Week Security Deposit
- Holding deposit equivalent to 1 week of rent
- Rent to be payable monthly in advance
- EPC Rating C (80)

- 1 Bedroom
- 572sq.ft (53.17sq.m)
- 3rd Floor
- Open Plan Reception
- Large Kitchen
- Furnished
- Good Storage
- Lift
- Quiet Courtyard Views
- 0.6 Miles to Vauxhall Station



EPC certificate available on request.



APPROX. GROSS INTERNAL FLOOR AREA 572 sq. ft / 53.17 sq. m

Floorplan is for illustrative purposes only and is not to scale.
Every attempt has been made to ensure the accuracy of the floorplan shown, however all measurements,
fixtures, fittings and data shown are an approximate interpretation for illustrative purposes only.
Liability for errors, omissions or mis-statement through negligence or otherwise is hereby excluded.

CP CREATIVE
PROPERTY MARKETING

